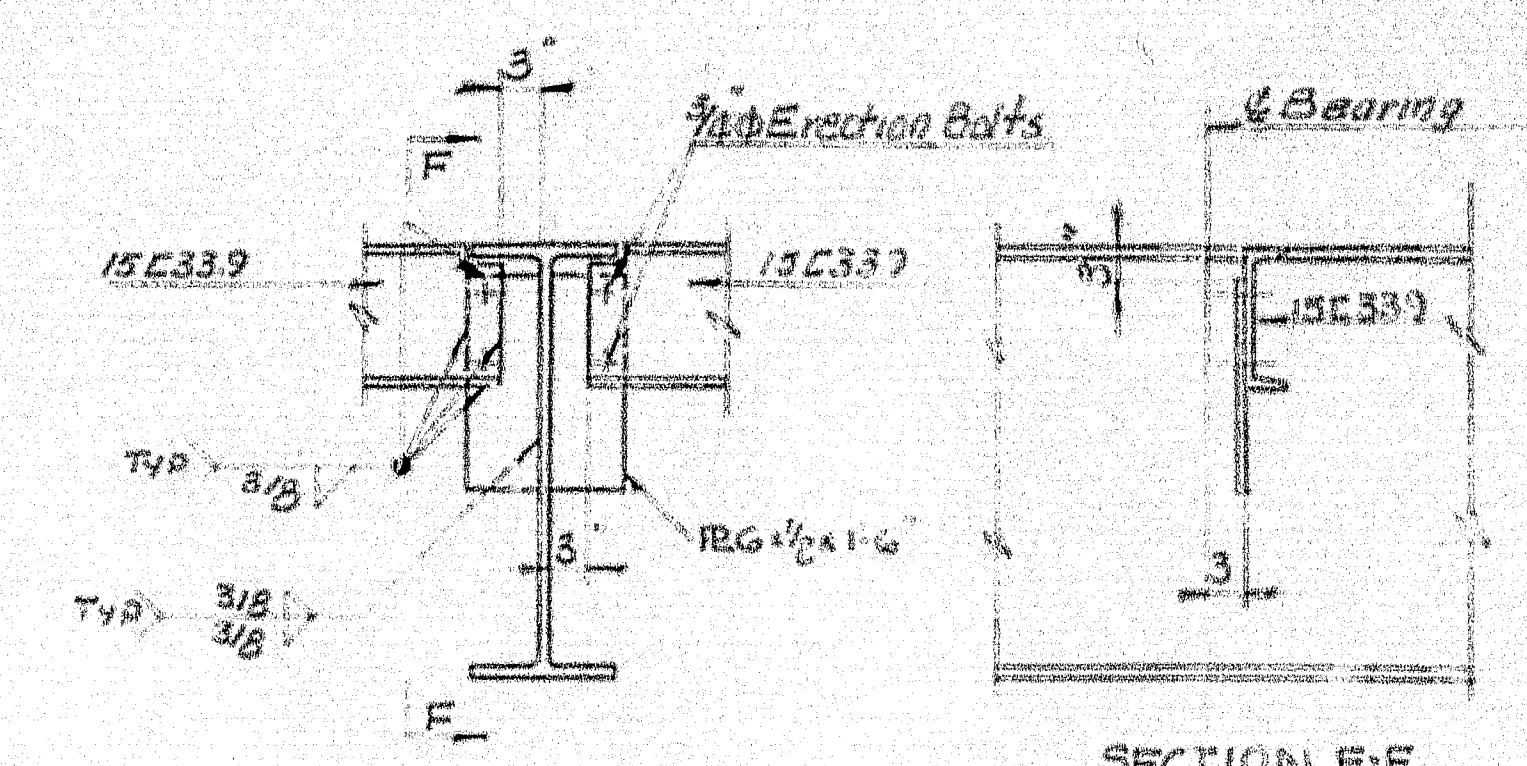
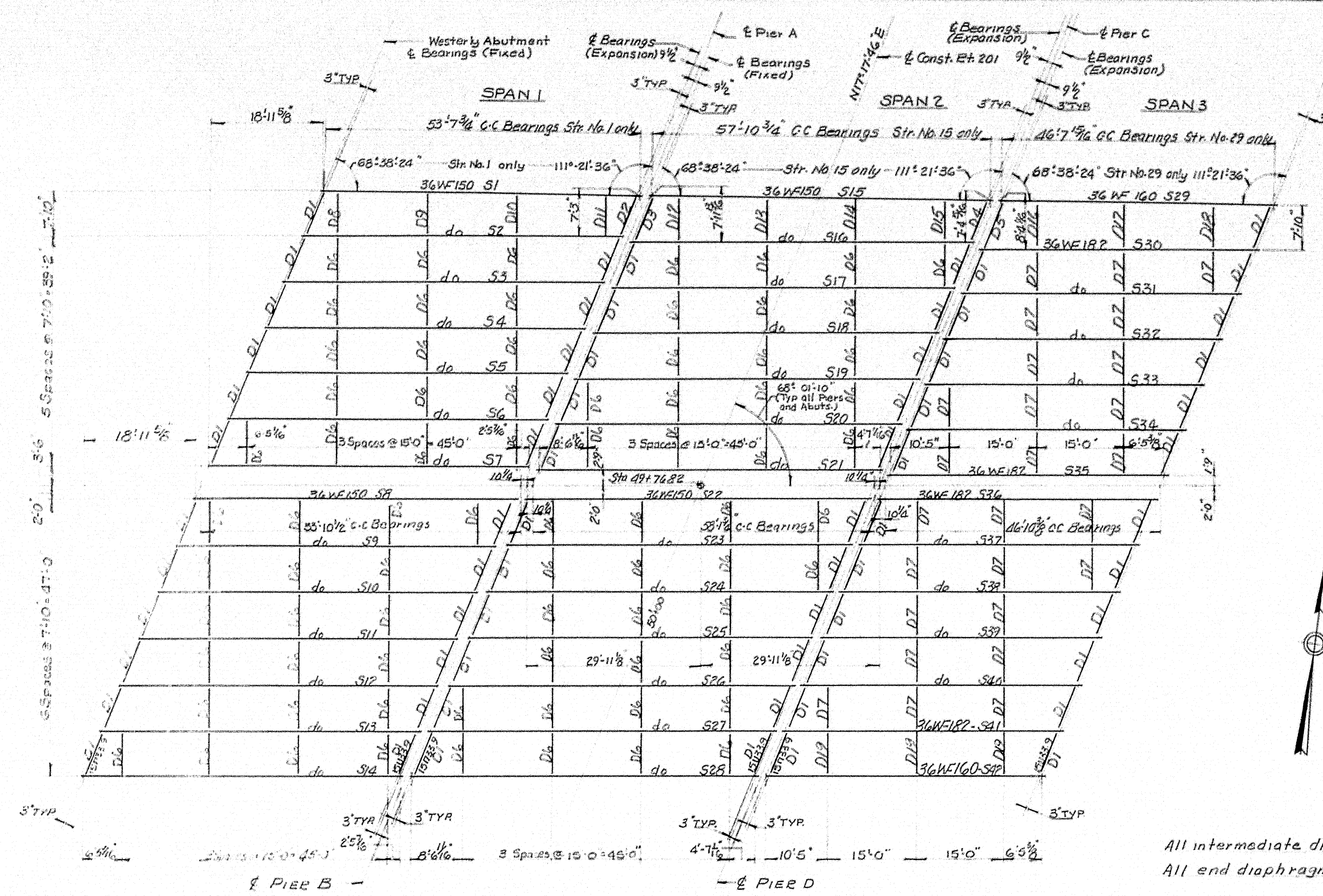
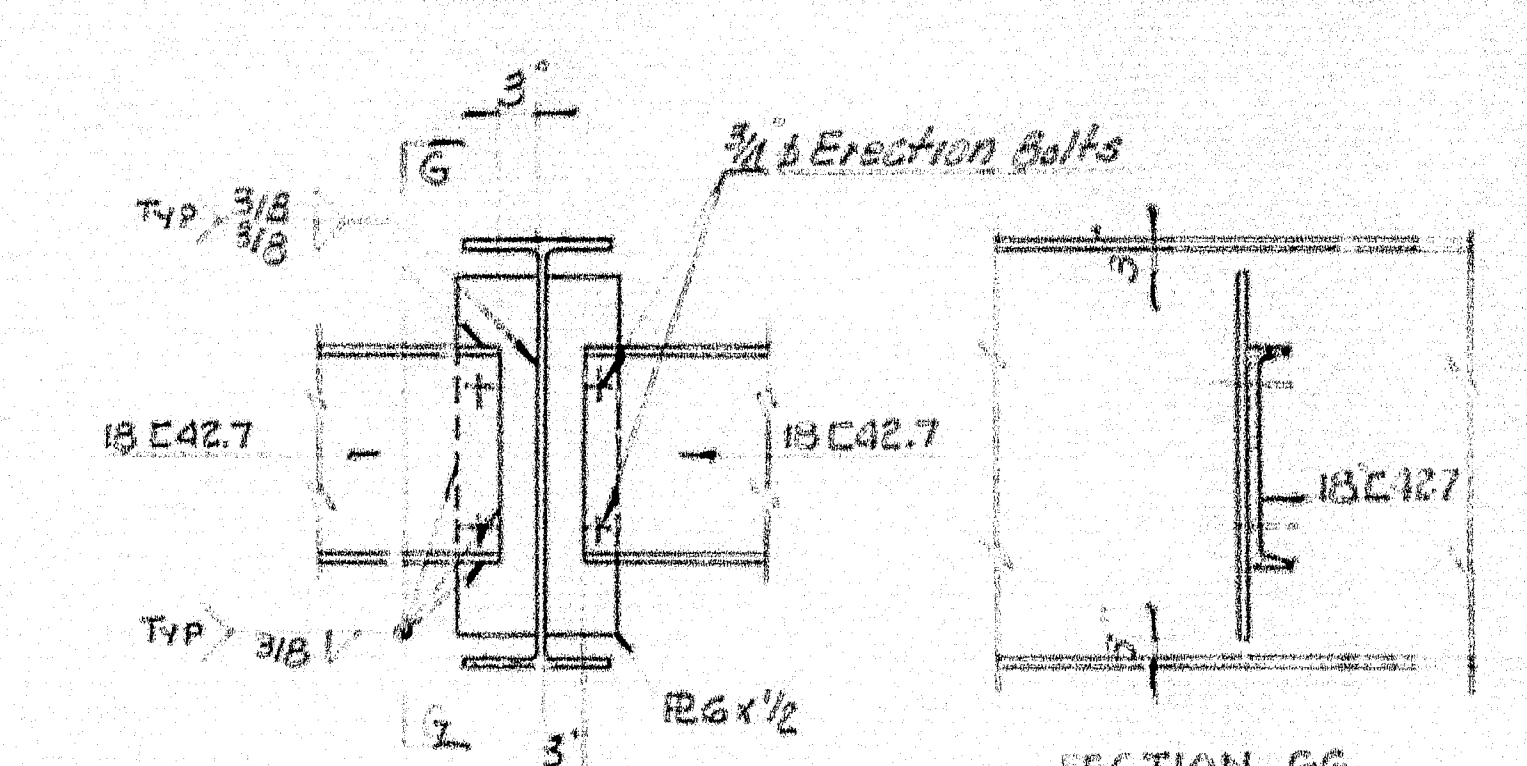


— & Bridge Construction



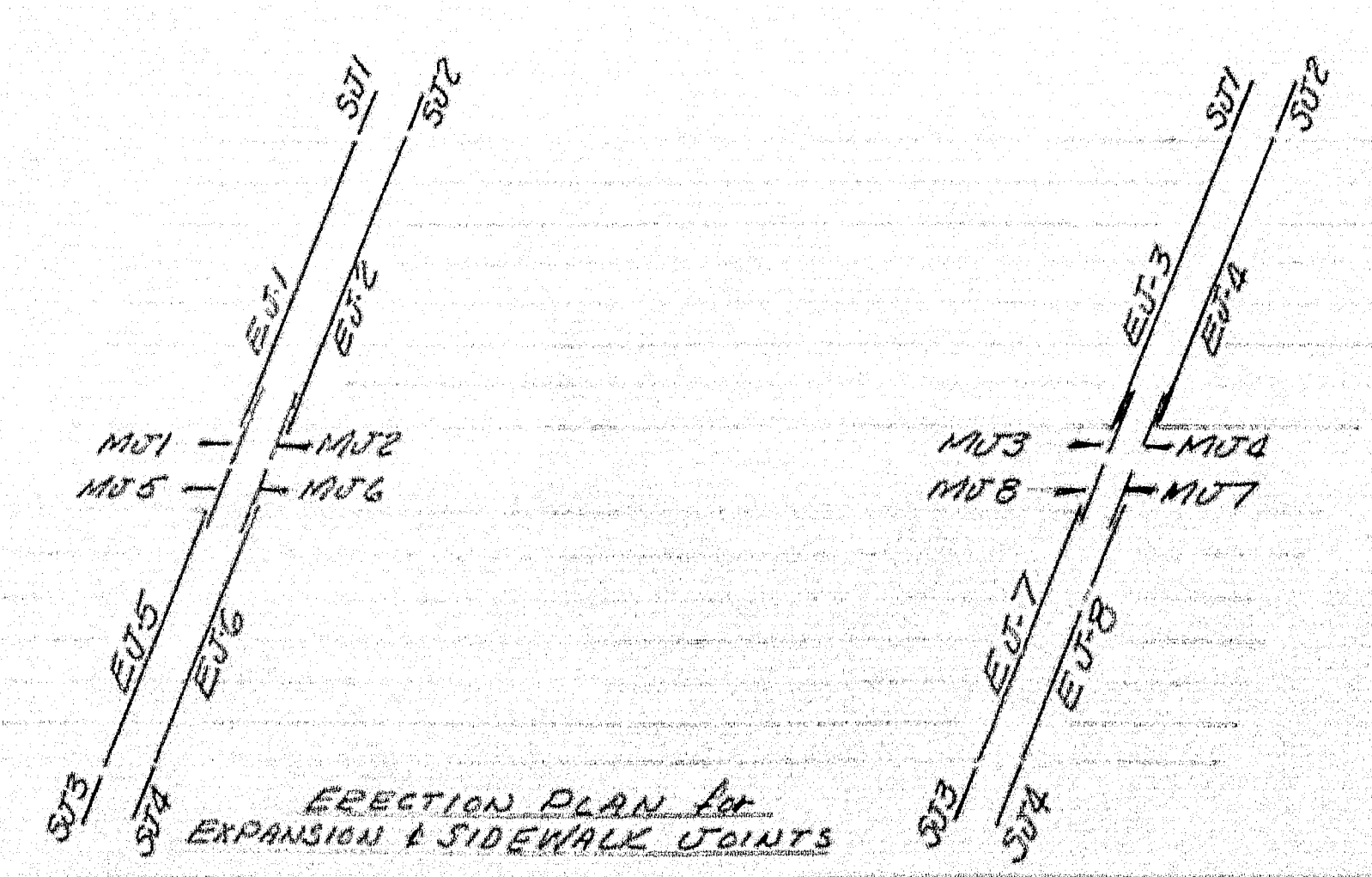
END DIAPHRAGM CONNECTION



INTERMEDIATE DIAPHRAGM CONNECTION TYPICAL

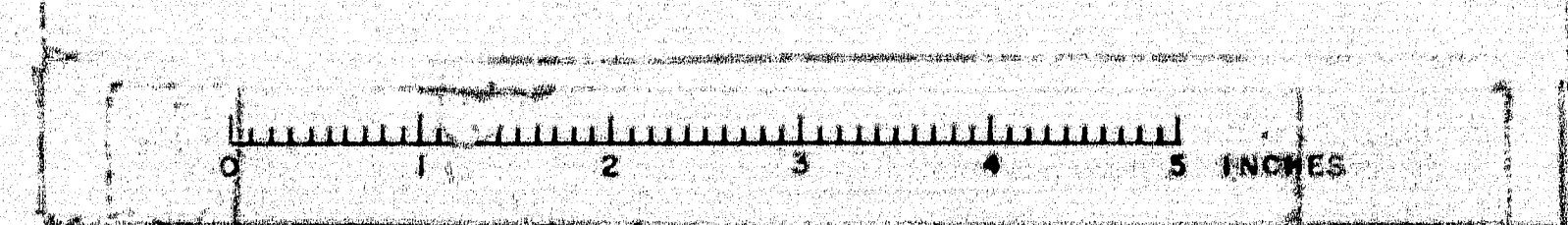
All intermediate diaphragms to be 15C42.7 (for to east)
All end diaphragms to be 15C33.9

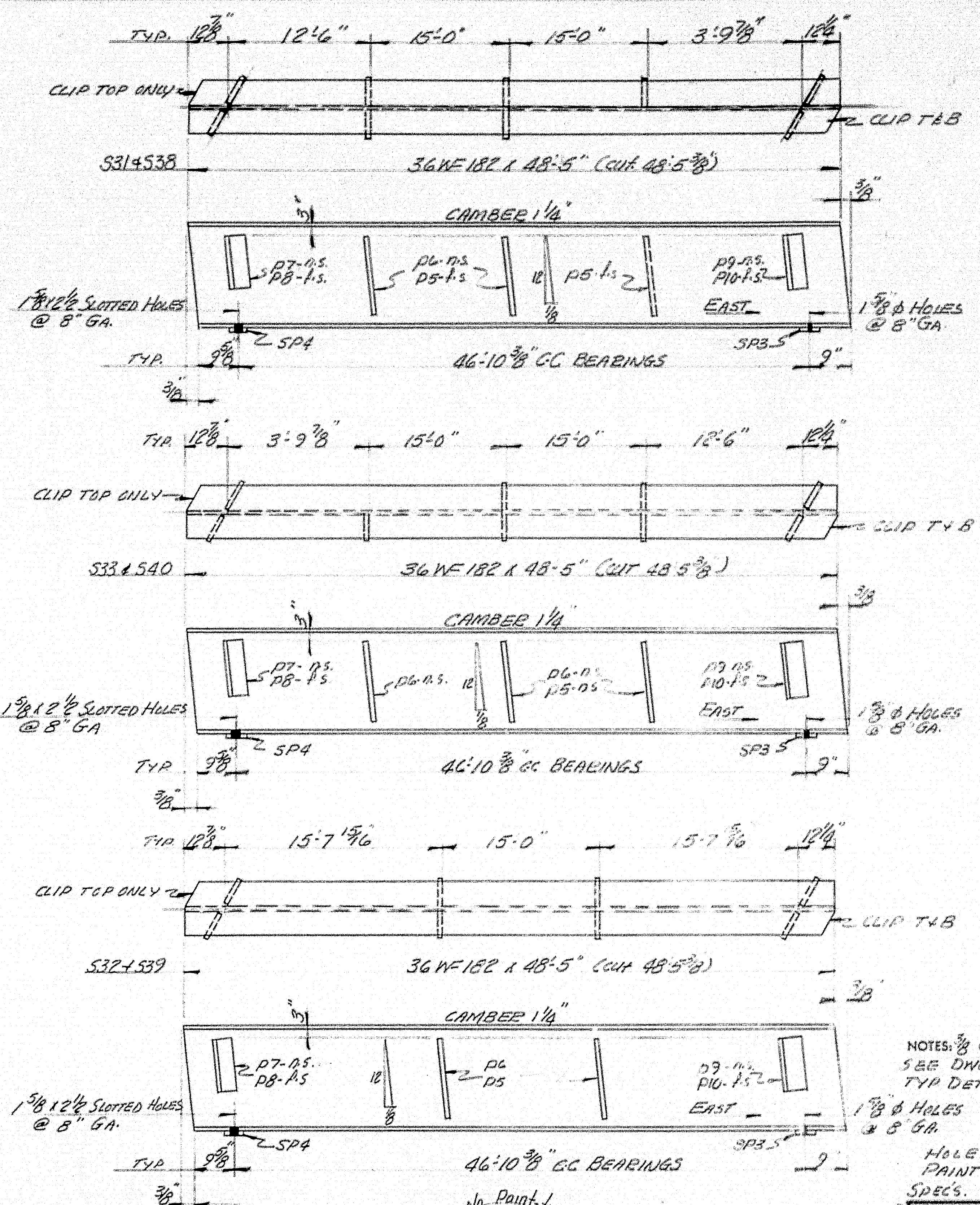
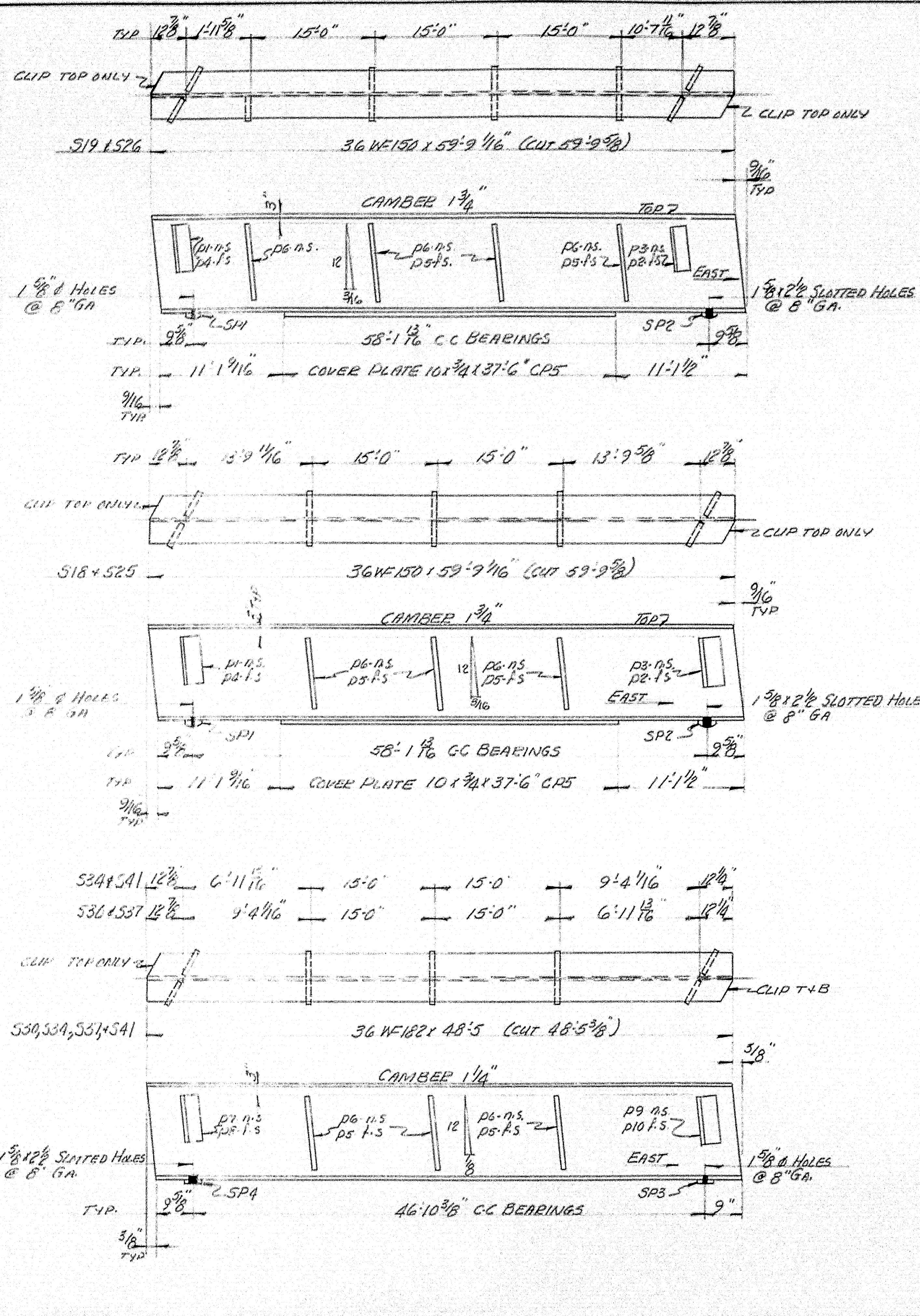
FRAMING PLAN



NOTES:

FRAMING PLAN			
Branco & Martin Rolling Mills Company			
South Portland, Maine			
INTERSTATE #95			
OVER ROUTE 201 RELOCATED			
FAIRFIELD, MAINE			
CUSTOMER ELLIS C. SNOODGRASS			
DESIGNER THE CLARKSON ENG. CO. INC.			
DRAWN	8.4.52	EGM.	
REVISION	7.23.59	EGM.	
REVISION			
REVISION			
ORDER NO. 16326		DWG. NO. 2169-E1	

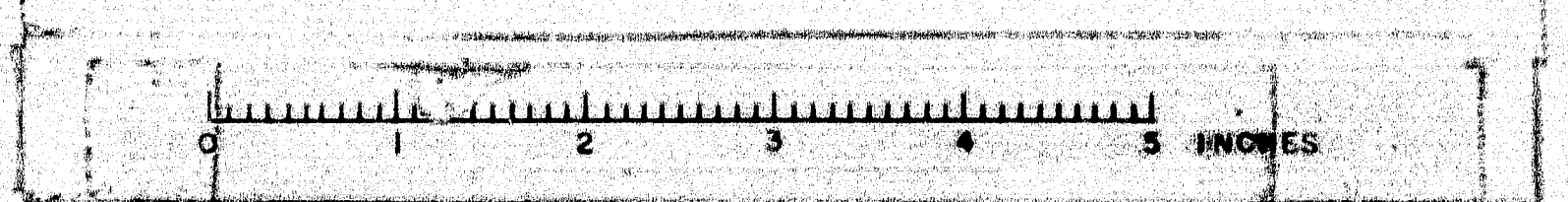
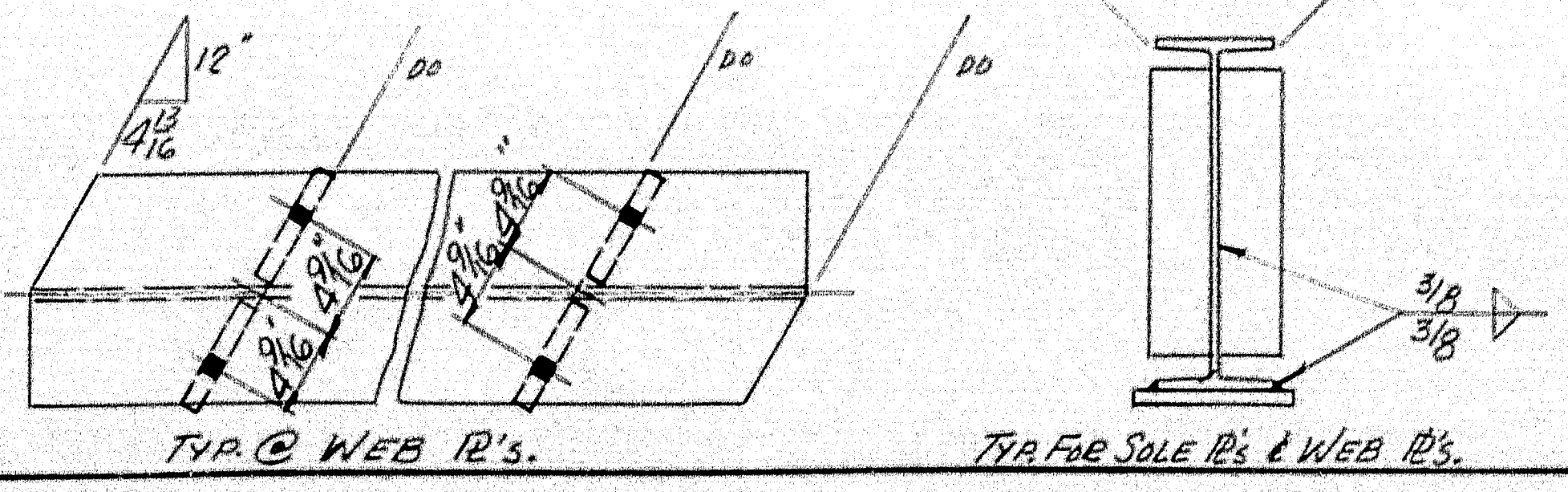


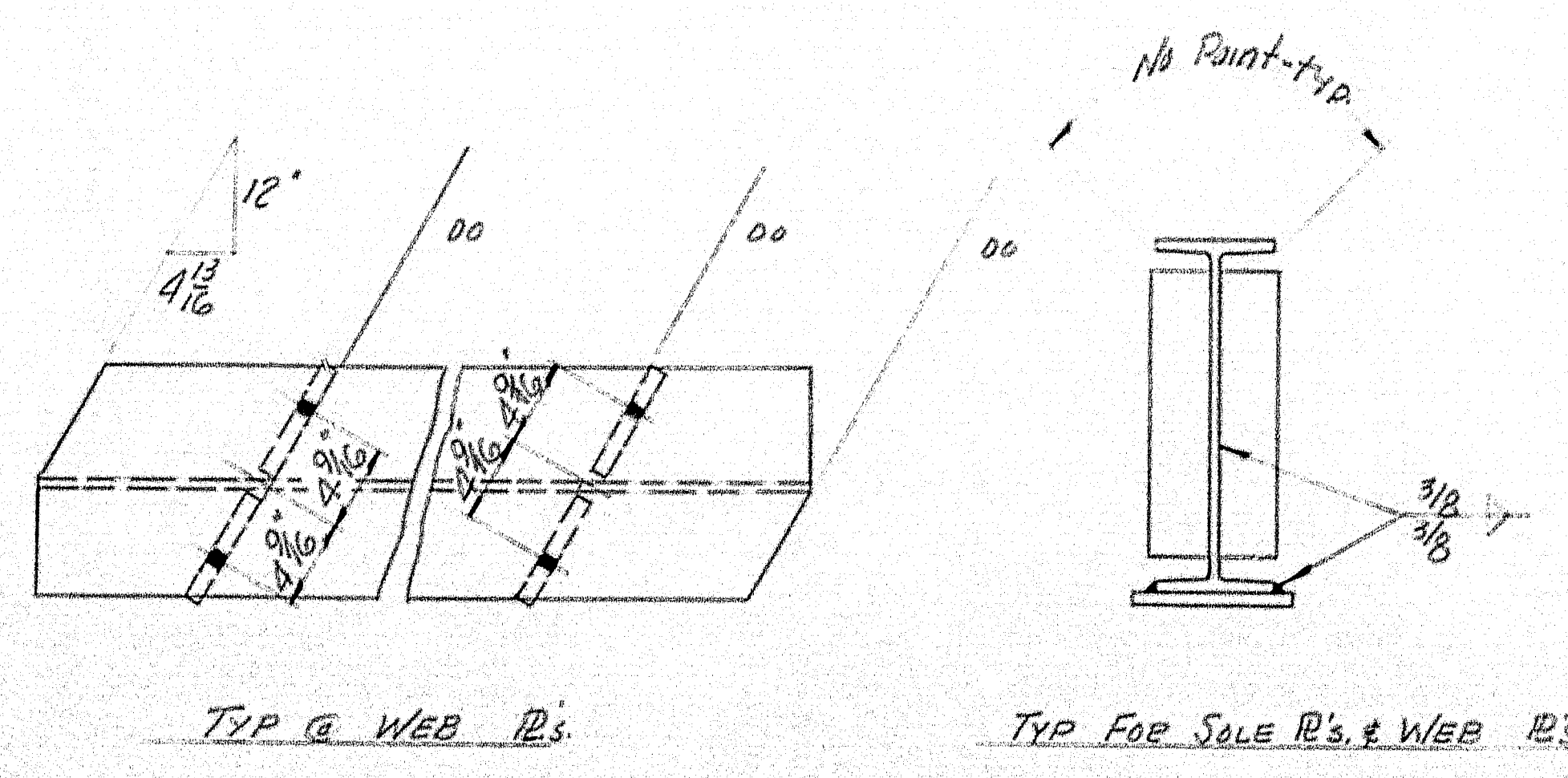
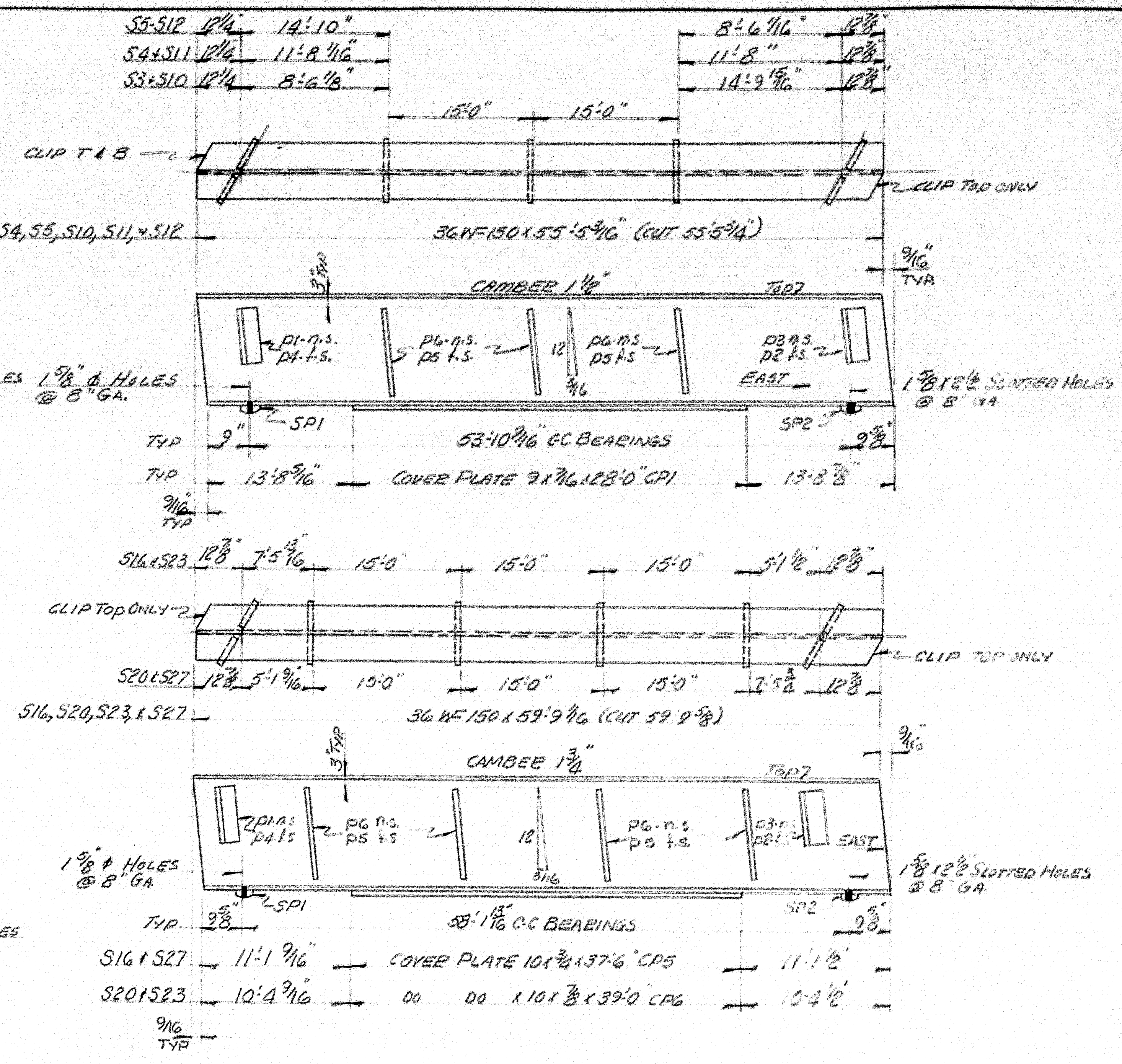
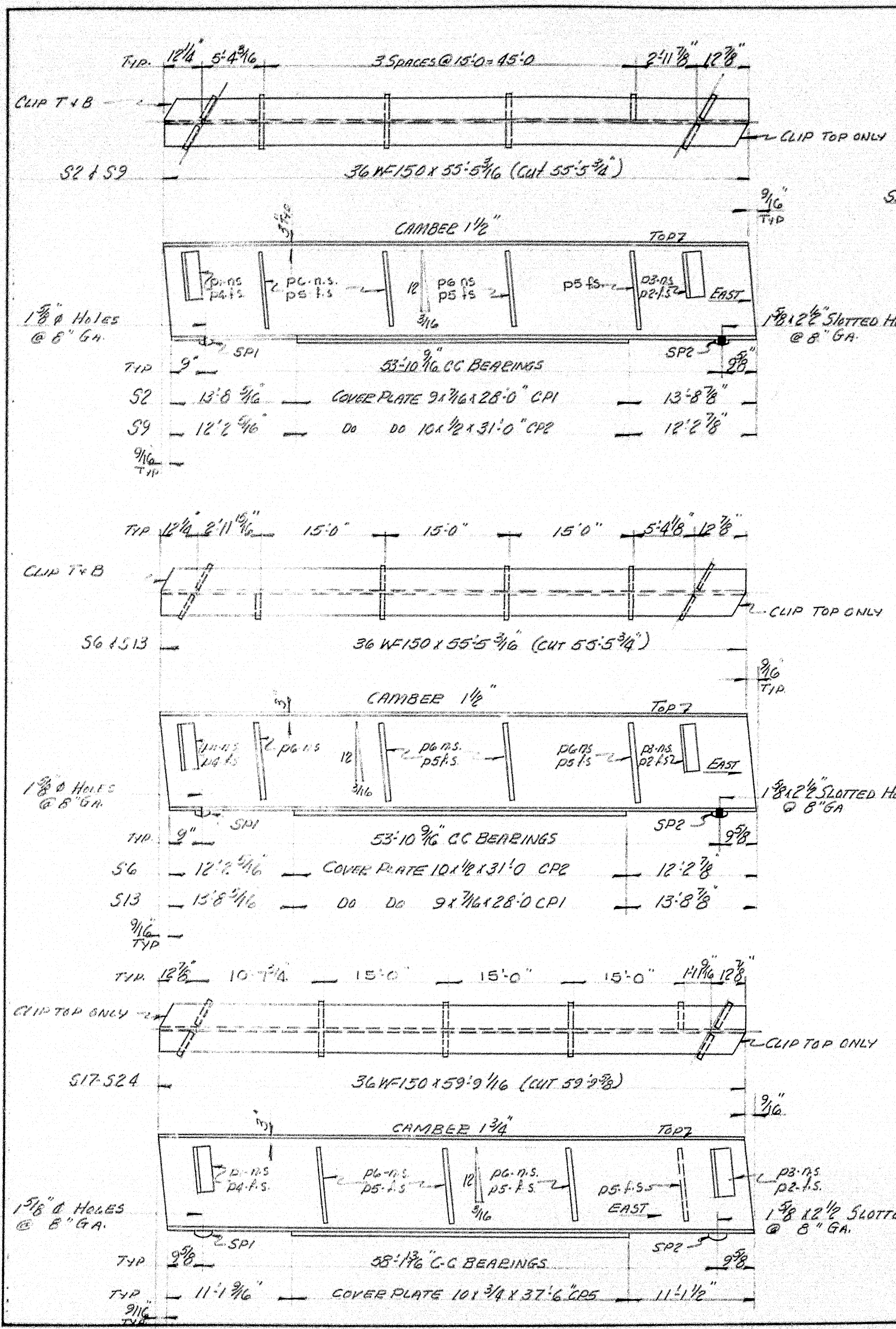


NOTES: 1/8" CONT. FILLSTATION ON ALL COVER PLATES.
SEE DWG 2-162-53 FOR BILL OF MAT.
TYP DETAILS & GENERAL NOTES

HOLES: AS NOTED.
PAINT: PER STATE OF MAINE
SPECS. & AS NOTED.

INTERIOR STEELER DETAILS	
Bancroft & Martin Rolling Mills Company	
South Portland, Maine	
INTERSTATE #35	
OVER ROUTE 201 RELOCATED	
FAIRFIELD, MAINE	
CUSTOMER: ELLIS C. SNODGRASS	
DESIGNER: THE CARLSON ENG. CO. INC.	
ORDER NO. 169-53	DWG. NO. 2-162-53





NOTES: 3/8 CONT. FILLET WELD ON ALL OVERLAPS
SEE DWG 2-162-55 FOR FULL DETAILS & GENERAL NOTES
HOLES: AS NOTED
PAINT: PER STATE OF MAINE SPEC'S
1 AS NOTED

INTERIOR DETAIL	
Bancroft & Martin Rolling Mills Company	
South Portland, Maine	
INTERSTATE # 95	
OVER RAMP 201 RELOCATED	
FAIRFIELD, MAINE	
CUSTOMER	ELLS & SANDERSON
DESIGNER	THE CLARKSON ENGINEERING
ORDER NO.	162-54
DWG. NO.	2-162-54

